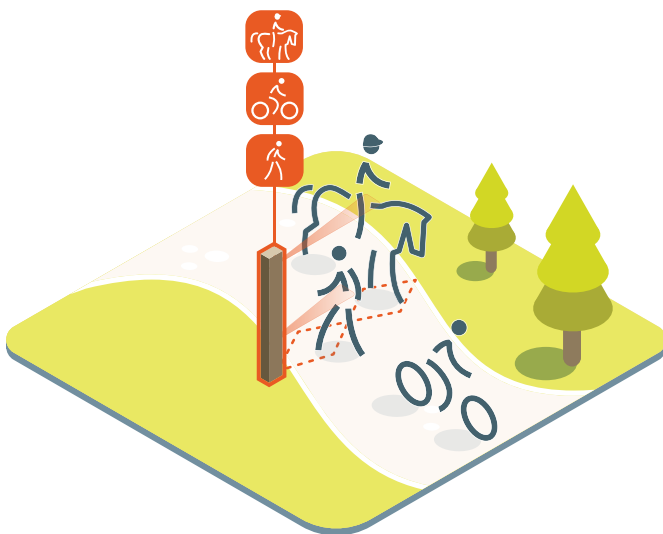


TECHNICAL SHEET

MULTI NATURE BICYCLE, PEDESTRIAN & EQUESTRIAN COUNTER

The MULTI Nature bicycle, pedestrian and equestrian counter is a versatile system which combines two PYRO (passive infrared) sensors and the ZELT (inductive loop) sensor. Each sensor is dedicated to a single user type. An intelligent subsystem, the Smart Connect, analyzes the signal from the sensors in order to count and classify each user. In addition to counting and classifying users, the MULTI Nature also distinguishes cyclist, pedestrian and equestrian direction of travel.

- + Battery powered
- + Works in all weather conditions
- + Seamless data transmission



General Characteristics

Technology	+ PYRO Sensor: Passive Infrared Pyroelectric + ZELT Sensor: Electromagnetic ZELT
Battery Life	+ 1 or 2 ZELT loops: 2 years + More than 2 ZELT loops: 1 year
Calibration	Autocalibration
Settings	Sensitivity can be set up with software (included)
Direction	Direction recognition an option
Covered Width	Up to 6m (19.5')
Data Backup	60-minute or 15-minute data recording interval
Memory	> 20 Months
Temperature Resistance	-40 °C to + 50 °C (-40 °F to 120 °F)
Waterproofness	IP 68

Physical Characteristics

+ Post

Dimensions	165 x 90 x 3150mm (6.5" x 3.5" x 124")
Material	Class 4 autoclave-treated pine wood

+ Manhole

Dimensions	Ø = 33cm (13"), H = 26cm (10")
Material	High-Density Polyethylene

+ ZELT Sensor

Power Supply	3.6 V / 17 Ah
Dimensions	+ Loop length: 110cm to 150cm (3.6' to 4.9') + Loop width: 40cm (15.7") + Spacing between two loops: 8cm to 16cm (3.15" to 6.3")
Installation	+ Trench depth: 4 to 5cm (1.5" to 1.9") + Trench width: 2cm (0.8")



TECHNICAL SHEET

MULTI NATURE BICYCLE, PEDESTRIAN & EQUESTRIAN COUNTER

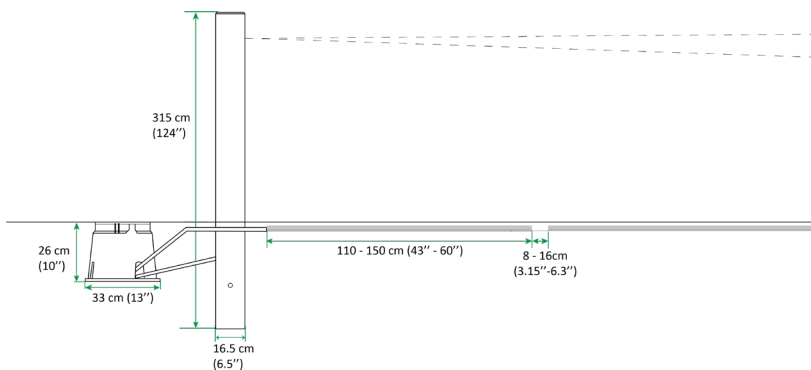
Physical Characteristics

+ PYRO Sensor

External Dimensions	98 x 40 x 13mm (3.85" x 1.55" x 0.5")
Cells Dimensions	Ø 15mm (0.60") / Thickness: 0.7mm (0.03")
Cable Length	4m (15')
Detection Cone	30cm at 2 meters / 60cm at 4 meters (12" at 6'6" / 24" at 13')
Cell Material	+ Medium-range PYRO Sensor: High-Density Polyethylene (HDPE) + PYRO-Zoom Sensor: Germanium
Sensor Body Material	Polyvinyl chloride
Connector	RJ45
Min. Sensitivity	1 °C (2 °F) from the ambient environment
Installation Height	+ PYRO Sensor for pedestrians: 80cm (31") + PYRO Sensor for horseback riders: 200cm (6'5")
Beam Angle	+ Medium-range PYRO Sensor: 7° + PYRO-Zoom Sensor: 4.5°

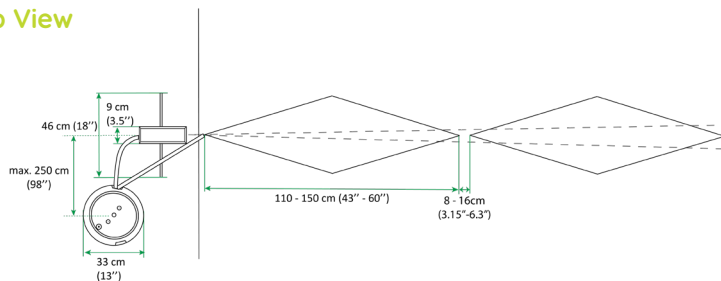
Installation Example

+ Side View



MULTI NATURE
BICYCLE, PEDESTRIAN &
EQUESTRIAN COUNTER
WITH TWO ZELT LOOPS

+ Top View



Europe | Worldwide
4 rue Charles Bourseul | 22300 Lannion | France
+33 2 96 48 48 81

North America
604-3981 St. Laurent Blvd. | Montreal, QC H2W 1Y5 | Canada
Toll Free: 1-866-518-4404 | Direct: 1-514-849-9779

www.eco-counter.com